



The LaM, a museum that pushes the limits



Welcome to the LaM!

The LaM, a museum that pushes the limits

View of the LaM's sculpture park. In the background, Richard Deacon's *Between Fiction and Fact* (detail, 1992).

© Richard Deacon.

Photo: N. Dewitte/LaM

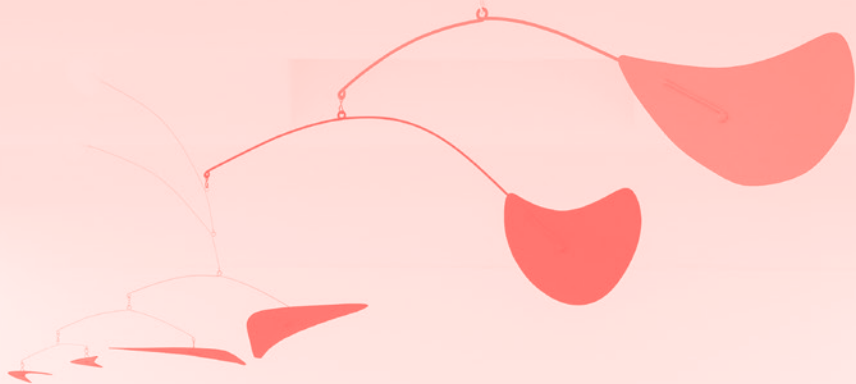
Set in a remarkable sculpture park, the LaM has established a unique itinerary for visitors, highlighting the intersection between modern art, contemporary art and art brut. With over 7,000 works, the museum provides a striking overview of the art of the 20th and 21st centuries. By encouraging new ways of interacting and thinking about art, whether through its permanent collection, temporary exhibitions or cultural programme, the museum is focused on sparking your sense of curiosity, and leaves you feeling inspired and moved.

Inaugurated in 1983 to house the modern art donation bequeathed by Geneviève and Jean Masurel, the LaM has since emerged as a leading museum on the world stage. Boasting an ambitious programme, it encourages encounters between artists who not only bear witness to their time, but weave a deeply personal perspective into their work.

A unique collection

The museum's world-renowned modern art collection features major pieces, including works by Georges Braque, Paul Klee, Henri Laurens, Fernand Léger, Joan Miró, Amedeo Modigliani and Pablo Picasso. Over the years more than 1,000 contemporary artworks have joined the collection over the years, cementing the LaM's role in today's creation. Artists represented include Etel Adnan, Alighiero Boetti, Christian Boltanski, Daniel Buren, Robert Filliou, Annette Messager and Kiki Smith among others. Whether presented as a counterpoint to an exhibition or as the main focus, contemporary art sets the stage for a lively dialogue between eras, places and artists.

In 1999 the donation by the association L'Aracine of over 3,500 pieces of art brut to the museum led to a significant discussion on where the boundaries of the creative act lie and on what basis are certain artists left on the sidelines. Today, the art brut collection has more than 5,500 artworks by artists such as Aloïse Corbaz, Henry Darger, Augustin Lesage, André Robillard, Willem Van Genk, Adolf Wölfli and Carlo Zinelli.



A richly rewarding programme

A view of a LaM gallery with works by Joan Miró, Alexander Calder and Fernand Léger.

© Successió Miró / ADAGP, Paris, 2020

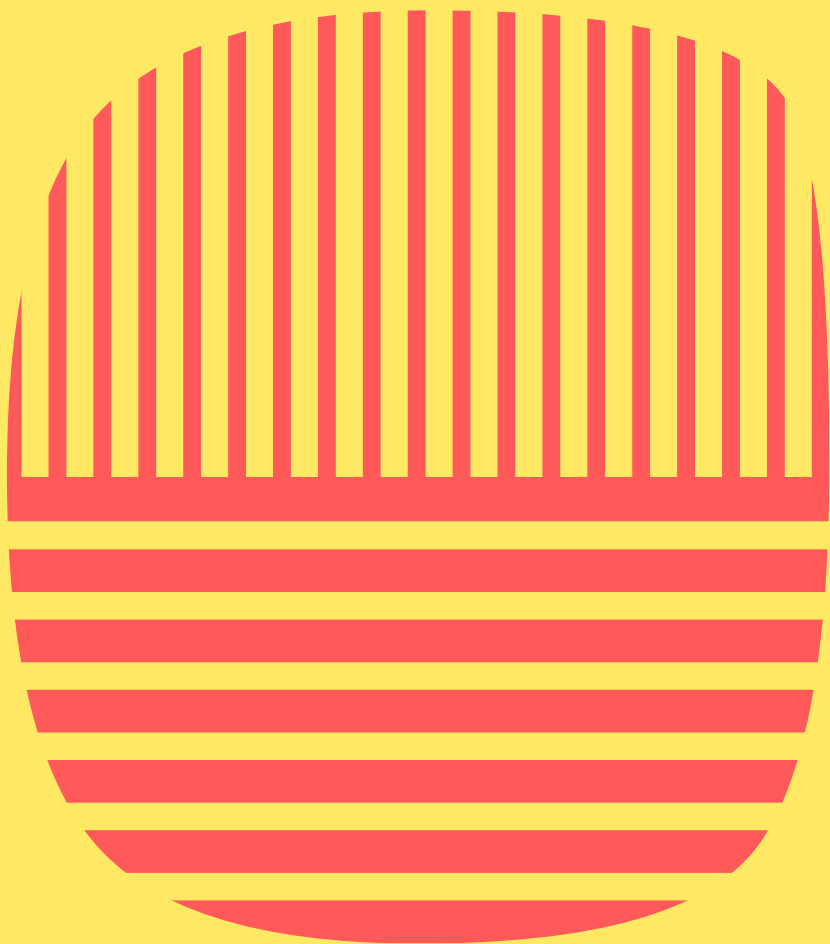
© 2020 Calder Foundation, New York / ADAGP, Paris, 2020

© ADAGP, Paris, 2020.

Photo: N. Dewitte/LaM

Two or three times each year, the LaM presents major temporary exhibitions that unveil the collection in a new light or highlight the work of significant artists in the history of art and contemporary creation. It also organises an innovative cultural programme all year round, for people from all walks of life, filled with performances, conferences and concerts, not to mention unmissable events like *Pochette Surprise!* for kids, “La Nuit électronique”, a music-themed evening for students and young adults, and the “Grand bal populaire”, a dance for all the family on 13 July, for the National Holiday.

The LaM is also somewhere you can take time out to socialise and swap ideas, so why not round your visit off with a workshop where everyone can take part to creative activities, or stroll around the park, among the monumental sculptures by Alexander Calder, Richard Deacon and Pablo Picasso.



The LaM, a museum that pushes the limits

The Dominique Bozo Library

+33 (0)3 20 19 68 98
dbozo@musee-lam.fr

Open Tuesdays to Fridays from
1:00 pm to 5:00 pm, and in the
mornings by appointment

With more than 40,000 books and magazines, the LaM's library is a recognised reference on art from the 20th and 21st centuries. Whether you're a researcher, student or simply keen to find out more, our librarians can advise you. In addition, throughout the year, the library organises a range of events.

The gift and bookshop

+33 (0)3 20 64 38 27
lalibrairieboutiquedulam@
laboutiquedulieu.fr

Open Tuesdays to Sundays
from 10:00 am to 6:00 pm

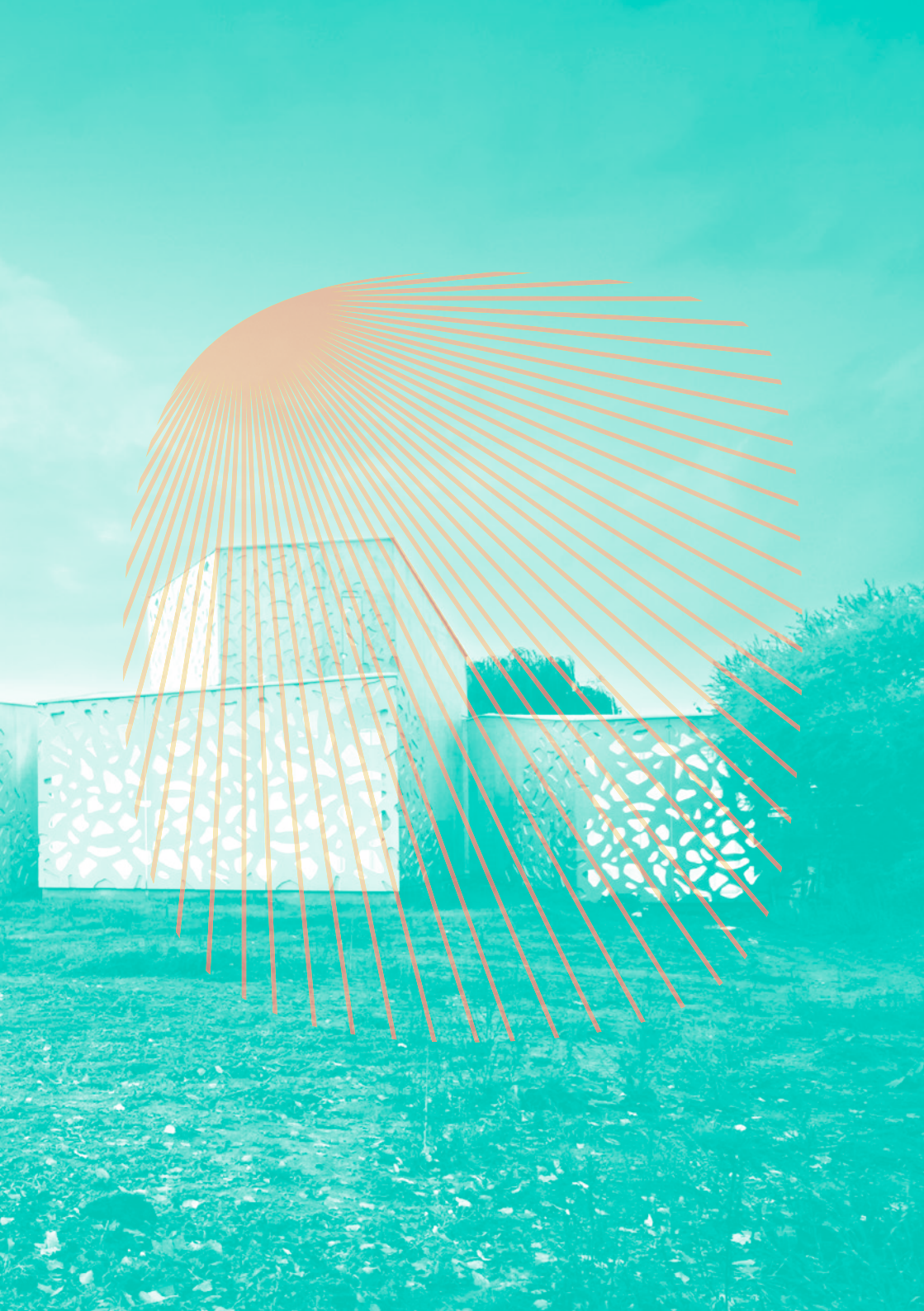
In addition to gifts and publications related to the museum, you will also find a selection of books on modern and contemporary art and art brut, as well as a selection of designer gifts and a children's section.

The Café du LaM

+33 (0)9 63 52 51 96
lecafedulam@gmail.com

Open Tuesdays to Sundays from
10:00 am to 6:00 pm
(opening hours are extended
during some events)

At once a restaurant and tearoom, the Café du LaM serves homemade cakes and meals, using local, seasonal produce, with vegetarian options available all year round.



Useful information

View of the LaM extension.
© Manuelle Gautrand Architecture.
Photo: M. Lerouge/MEL

Opening times

Tuesdays to Sundays
from 10:00 am to 6:00 pm
Closed on 1st January, 1st May
and 25 December

Admission fees

Permanent collection:
€7/ €5 / free

**Temporary exhibition +
permanent collection:**
€10 / €7 / free

**Large-scale temporary
exhibition + permanent
collection:** €11 / €8 / free

For groups of a fixed number

Pricing and booking at +33
(0)3 20 19 68 88, Tuesdays to
Fridays, from 9:30 am to 12:30
pm and from 2:00 pm to 5:00
pm, or you can send an email
to reservation@musee-lam.fr

Getting here

- **by public transport with Ilévia**
metro line 1, get off at Pont
de Bois + bus Liane 6,
towards Villeneuve d'Ascq
Contrescarpe, get off at the
L.A.M. stop or bus route 32,
towards Wasquehal Jean-
Paul Sartre, get off at the
L.A.M. stop. or metro line 2,
get off at Fort de Mons + bus
Liane 6, towards Villeneuve
d'Ascq Contrescarpe, get off
at the L.A.M. stop
- **By car**
20 min. drive from Lille
Flandres train station,
take the Paris-Ghent
motorway route (A1/
A22/N227), junction 5
or 6 Flers/Château/Musée
d'art moderne

LaM

Lille Métropole Musée d'art moderne,
d'art contemporain et d'art brut

1 allée du Musée – 59650 Villeneuve d'Ascq, France
T.: + 33 (0)3 20 19 68 68
www.musee-lam.fr

    #museeLaM



MÉTROPOLE
EUROPÉENNE DE LILLE



Villeneuve d'Ascq
Une ville en mouvement

