



Crédits photo : F. Iovino

At the LaM, you will feel at home !

The LaM is a garden-museum with an atypical collection that offers a unique overview of 20th- and 21st-century creation.

In 4,000 m² you will discover permanent and temporary exhibitions, and a diverse collection of over 8,000 works, by Etel Adnan, Christian Boltanski, Georges Braque, Daniel Buren, Aloïse Corbaz, Henry Darger, Robert Filliou, Paul Klee, Fernand Léger, Augustin Lesage, Annette Messager, Joan Miró, Amedeo Modigliani, Pablo Picasso, André Robillard, Kiki Smith and Adolf Wölfli, among many others

The LaM also includes 23,000 m² of parkland featuring monumental sculptures by Alexander Calder, Richard Deacon and Pablo Picasso, and a library holding more than 40,000 volumes.

Within the museum, you'll find an auditorium, bookshop and café-restaurant.

Throughout the year the LaM offers guided visits, art workshops, performances, meetings and conferences.

Permanent Collection

New presentation of the collection

→ March 2023

Fernand Léger,
Crédits photo : Aloïse Corbaz.
© Adapg, Paris, 2023.
Photo : F. Iovino / LaM, 2022.



Exhibition

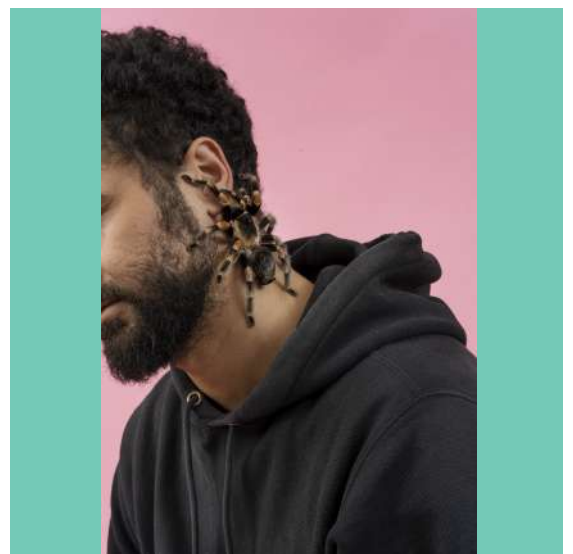
Mohamed Bourouissa

Strange Attractor

→ 29.09.2023 – 21.01.2024

© Crédits photo– Mohamed
Bourouissa, *Sans titre*, 2022.
Adapg, Paris, 2023.

Mohamed Bourouissa, is a Franco-Algerian artist. His work has been exhibited all over the world and he is considered one of the most important artists of his generation. His work, which blurs the lines between fiction and documentary, captures the social realities of our times through the observation of society from its margins.



Exhibition

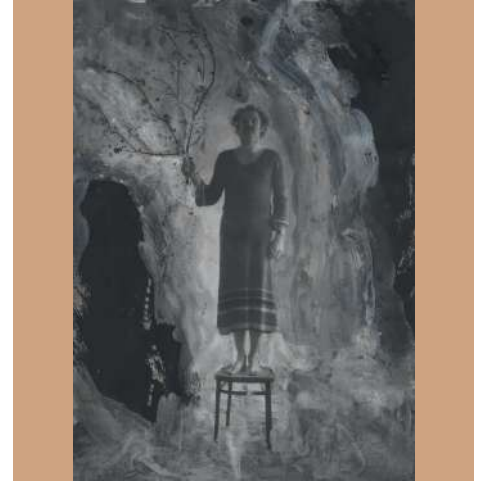
Anselm Kiefer

Photography in the beginning

→ 06.10.2023 – 03.03.2024

Anselm Kiefer, (Ohne Titel),
1969-2009 ; 110,5 x 86 cm.
© Anselm Kiefer.
Photo : Georges Poncet

To celebrate the end of its anniversary year, the LaM is presenting an exhibition devoted to one of the greatest German artists of his generation, Anselm Kiefer. His work, which includes paintings, objects, sculptures, books and photography, is internationally acclaimed. Well-known and celebrated for his monumental creations, the artist is exhibiting more than 130 of his works at the museum, some of which have never been shown before. They bear witness to his use of photography and to the question of how the image is revealed, which is central to his work yet has rarely been explored in exhibitions.



Little pleasures



Restaurant the Café du LaM

Tuesday to Sunday,
10 a.m. to 6 p.m.

+33(0)9 63 52 51 96
lecafedulam@gmail.com



The Gift and Bookshop

Tuesday to Sunday,
from 10 a.m. to 1 p.m.
and 2 p.m. to 6 p.m.

+33 (0)3 20 64 38 27
lailibrairieboutiquedulam@
laboutiquedulieu.fr



The Gift and Bookshop

After your visit, enjoy exploring the Gift and Bookshop and unearth the book, souvenir or gift you've been dreaming of! Véronique and Béatrice will be delighted to advise you.



The Café du LaM

Take a gourmet break after your visit! The menu includes Olivia's generous cuisine, Thomas' warm welcome, and their wide range of home-made delicacies !



Opening times

Tuesday to Friday,
to 9 a.m. to 6 p.m.
Saturday and Sunday,
to 10 a.m. to 6 p.m.



Adult groups

→ Reservation service
+33 (0)3 20 19 68 88 | 85
reservation@musee-lam.fr

→ Guided Tour

Exhibition

1h 195 €

English or dutch

1h 220 €

1h30 250 €

*package includes delivery of
the speaker guide and museum
admission(exhibition and permanent
collections) up to 25 people.

Parking



Two public parking
(unsupervised) are available :

- Parking P7 (Des moulins,
vehicles de + de 1,8 m)

- Parking P8
(maximum high : 1,8 m),
near the entrance of the
museum, but smaller than the
P7

LaM

1 allée du Musée
59 650 Villeneuve d'Ascq
France
+33 (0)3 20 19 68 68 | 51
musee-lam.fr
#museeLaM



Credits photo : F. Iovino

See you soon !